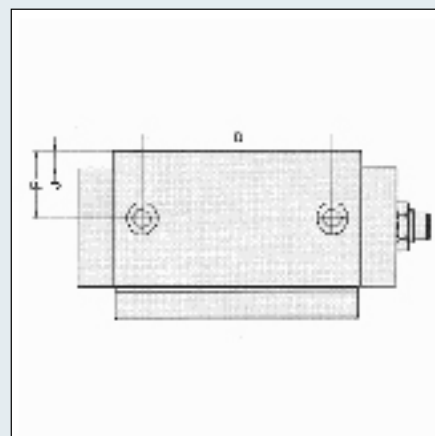
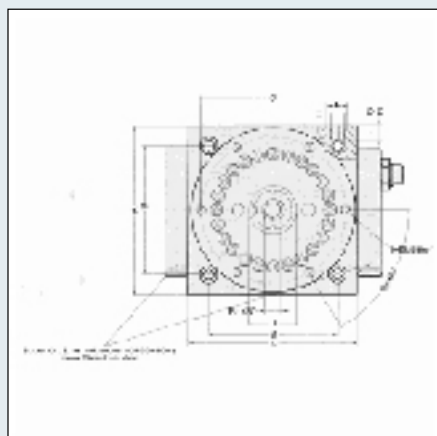
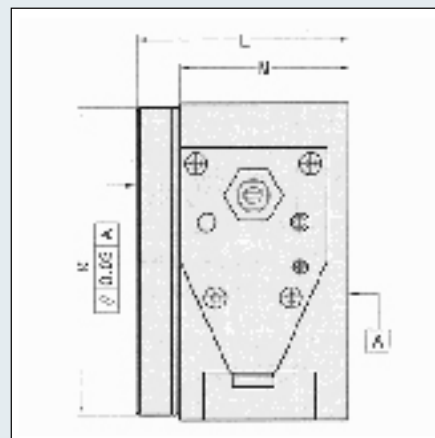
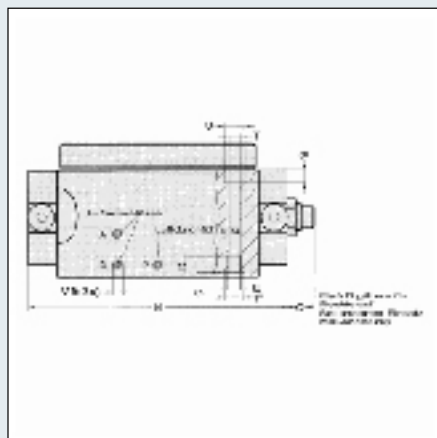
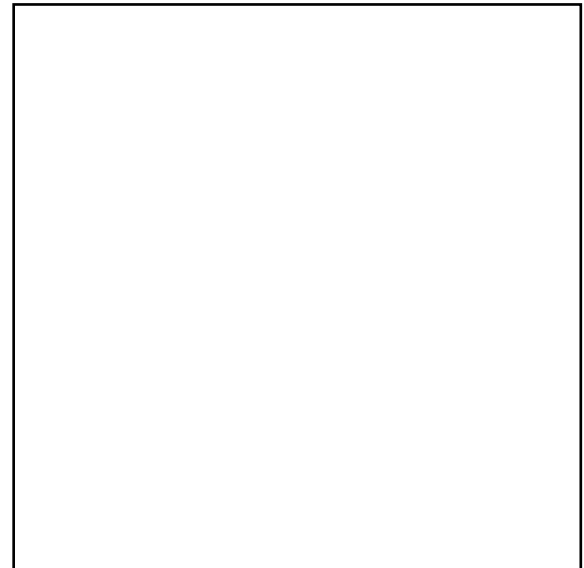
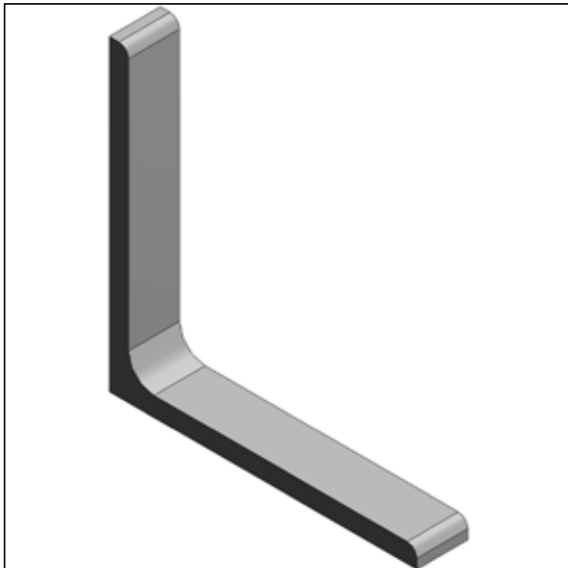




# Steel Section ANGLE

## PDF DATASHEET

© 1992 - 2012 CADENAS GmbH  
changedate  
creationDate





# Steel Section

## ANGLE

### PDF DATASHEET

© 1992 - 2012 CADENAS GmbH  
changedate  
creationDate



# Steel Section

## ANGLE

## PDF DATASHEET

© 1992 - 2012 CADENAS GmbH  
changedate  
creationDate

TYP	RSE-4
A	105 mm
B	80 mm
C	92 mm
D	30H7 mm
E	M8 mm
F	13H7 mm
G	2.1 mm
H	18 mm
J	7 mm
K	102 mm
L	70 mm
M	56 mm
N	134 mm
O	30 mm
P	28 mm
Q	2 mm
R	12 mm
S	6.5 mm
T	6.4 mm
U	10.5 mm



# Steel Section

## ANGLE

TYP	RSE-4
A	105 mm
B	80 mm
C	92 mm
D	30H7 mm
E	M8 mm
F	13H7 mm
G	2.1 mm
H	18 mm
J	7 mm
K	102 mm
L	70 mm
M	56 mm
N	134 mm
O	30 mm
P	28 mm
Q	2 mm
R	12 mm
S	6.5 mm
T	6.4 mm
U	10.5 mm



# Rundschalteinheit RSE-4-.. RSE-4-..

## Stückliste

TYP	RSE-4
A	105 mm
B	80 mm
C	92 mm
D	30H7 mm
E	M8 mm
F	13H7 mm
G	2.1 mm
H	18 mm
J	7 mm
K	102 mm
L	70 mm
M	56 mm
N	134 mm
O	30 mm
P	28 mm
Q	2 mm
R	12 mm
S	6.5 mm
T	6.4 mm
U	10.5 mm



# Rundschalteinheit RSE-4-.. RSE-4-..

## PDF DATASHEET

© 1992 - 2012 CADENAS GmbH  
changedate  
creationDate

TYP	RSE-4
A	105 mm
B	80 mm
C	92 mm
D	30H7 mm
E	M8 mm
F	13H7 mm
G	2.1 mm
H	18 mm
J	7 mm
K	102 mm
L	70 mm
M	56 mm
N	134 mm
O	30 mm
P	28 mm
Q	2 mm
R	12 mm
S	6.5 mm
T	6.4 mm
U	10.5 mm



# Rundschalteinheit RSE-4-.. RSE-4-..

## PDF DATASHEET

© 1992 - 2012 CADENAS GmbH  
changedate  
creationDate

### ***Embedded Files:***



click2save text

attach save / adobe security info text